

UNIVERSITY OF WYOMING

# GA Stipends Analysis 2008~2009



## TABLE OF CONTENTS

<i>Average Graduate Assistant Stipends, 2008-09</i> .....	<i>3</i>
Chart: GA Salary Factors by College.....	7
Chart: GA Salary Factors by Department/Program .....	8
<i>GA Salary Factors, 6-Year Comparison by Department</i> .....	<i>10</i>
Chart: UW GA Salaries Compared to APLU Average.....	14

Average Graduate Assistant Stipends  
2008~2009

**The University of Wyoming**  
**Analysis of Graduate Assistant Stipend Averages by Department**  
**Association of Public and Land-grant Universities (APLU) Averages**  
**(Using the OSU Graduate Assistant Stipend Survey)**  
**Academic Year 2008-2009**

CIP Code	COLLEGE Department/Program	Total		UW Salary Range <sup>3</sup>			APLU		UW Salary Factor <sup>4</sup>
		Grad. Assts. <sup>1</sup>		High	Low	Average	Salary Averages	Depts. Report'g	
		N	FTE <sup>2</sup>						
<b>COLLEGE OF AGRICULTURE</b>									
1.0103	Agriculture & Applied Economics	8	7.75	\$15,408	\$11,072	\$11,614	\$14,864	13	0.78
1.0901	Animal Science	14	13.00	15,408	11,072	12,126	14,251	16	0.85
19.0101	Family & Consumer Sciences	2	2.00	11,072	11,072	11,072	14,965	7	0.74
1.1001	Food Science & Human Nutrition*	3	3.00	11,072	11,072	11,072	14,844	8	0.75
26.0204	Molecular Biology	19	18.50	18,378	15,408	15,564	16,741	3	0.93
26.0204	Molecular Biology, Research*	1	1.00	22,500	22,500	22,500	18,120	4	1.24
1.1102	Plant Sciences	9	9.00	15,408	11,072	13,963	15,437	5	0.90
3.0101	Renewable Resources	30	27.75	18,000	11,072	12,676	13,411	6	0.95
51.2401	Veterinary Science	6	6.00	16,344	11,072	14,018	17,598	4	0.80
	<b>Total Agriculture</b>	<b>92</b>	<b>88.00</b>	<b>\$22,500</b>	<b>\$11,072</b>	<b>\$13,329</b>	<b>\$14,956</b>		<b>0.89</b>
<b>COLLEGE OF ARTS &amp; SCIENCES</b>									
5.0102	American Studies	14	13.50	\$11,072	\$11,072	\$11,072	\$13,845	9	0.80
45.0201	Anthropology	15	10.75	15,408	11,072	12,806	15,175	21	0.84
26.0301	Botany	20	17.25	22,500	11,072	13,977	13,196	4	1.06
40.0501	Chemistry	25	23.00	16,695	16,128	16,151	17,651	35	0.92
9.0101	Communication & Journalism	15	14.00	11,072	11,072	11,072	13,575	16	0.82
23.0101	English	27	26.50	11,072	11,072	11,072	14,817	32	0.75
45.0701	Geography & Recreation	8	8.00	15,500	11,072	11,626	14,141	24	0.82
40.0601	Geology & Geophysics	24	21.50	24,507	11,072	14,636	16,319	27	0.90
40.0601	Geology & Geophysics*	1	1.00	22,500	22,500	22,500	17,667	25	1.27
54.0101	History	10	7.50	11,072	11,072	11,072	14,191	31	0.78
45.0901	International Studies	8	4.25	12,917	11,072	11,303	11,769	2	0.96
27.0101	Mathematics	24	23.50	20,400	11,072	15,266	17,278	34	0.88
27.0101	Mathematics*	1	1.00	22,500	22,500	22,500	17,858	28	1.26
16.0101	Modern & Classical Languages	10	8.50	11,072	11,072	11,072	13,303	19	0.83

**The University of Wyoming**  
**Analysis of Graduate Assistant Stipend Averages by Department**  
**Association of Public and Land-grant Universities (APLU) Averages**  
**(Using the OSU Graduate Assistant Stipend Survey)**  
**Academic Year 2008-2009**

CIP Code	COLLEGE Department/Program	Total		UW Salary Range <sup>3</sup>			APLU		UW Salary Factor <sup>4</sup>
		Grad. Assts. <sup>1</sup>		High	Low	Average	Salary Averages	Depts. Report'g	
		N	FTE <sup>2</sup>						
<b>COLLEGE OF ARTS &amp; SCIENCES, cont'd</b>									
50.0901	Music	9	7.50	11,072	11,072	11,072	13,094	29	0.85
38.0101	Philosophy	5	5.00	11,072	11,072	11,072	14,249	25	0.78
40.0801	Physics & Astronomy	16	14.00	18,500	11,984	15,870	17,427	32	0.91
45.1001	Political Science	8	8.00	11,072	11,072	11,072	14,993	29	0.74
42.0101	Psychology	22	22.00	16,002	11,072	13,661	14,354	33	0.95
42.0101	Psychology, Research*	1	1.00	22,500	22,500	22,500	14,266	30	1.58
45.1101	Sociology	6	5.00	11,072	11,072	11,072	15,099	33	0.73
27.0501	Statistics	12	11.50	15,408	11,072	14,685	16,255	13	0.90
26.0701	WY Cooperative Research Unit*	8	7.00	22,500	11,072	13,224	16,658	6	0.79
26.0701	Zoology & Physiology	25	20.11	17,937	11,072	13,264	15,377	5	0.86
	<b>Total Arts &amp; Sciences</b>	<b>314</b>	<b>281.36</b>	<b>\$24,507</b>	<b>\$11,072</b>	<b>\$13,260</b>	<b>\$15,209</b>		<b>0.87</b>
<b>COLLEGE OF BUSINESS</b>									
52.0301	Accounting	8	4.00	\$11,072	\$11,072	\$11,072	\$12,341	24	0.90
52.0601	Economics & Finance	34	24.50	15,408	11,072	13,878	13,203	8	1.05
52.0601	Economics & Finance*	1	1.00	30,816	30,816	30,816	14,237	5	2.16
52.0201	Management & Marketing	11	5.75	11,072	11,072	11,072	12,456	18	0.89
	<b>Total Business</b>	<b>54</b>	<b>35.25</b>	<b>\$30,816</b>	<b>\$11,072</b>	<b>\$13,204</b>	<b>\$12,942</b>		<b>1.02</b>
<b>COLLEGE OF EDUCATION</b>									
13.0501	Adult Learning & Technology	6	6.00	15,408	11,072	14,685	13,154	2	1.12
13.1101	Counselor Education	10	10.00	15,408	11,072	13,674	14,132	7	0.97
13.0601	Educational Studies	1	1.00	15,408	15,408	15,408	16,295	2	0.95
13.1202	Elementary & Early Childhood Ed	5	3.50	15,408	11,072	12,806	11,764	3	1.09
13.1205	Secondary Education	4	4.00	15,408	15,408	15,408	14,778	2	1.04
13.1316	Science & Math Teaching Center	2	2.00	15,408	11,072	13,240	11,376	13	1.16
13.1001	Special Education	1	1.00	13,696	13,696	13,696	15,658	11	0.87
	<b>Total Education</b>	<b>29</b>	<b>27.50</b>	<b>\$15,408</b>	<b>\$11,072</b>	<b>\$14,003</b>	<b>\$13,548</b>		<b>1.03</b>

**The University of Wyoming**  
**Analysis of Graduate Assistant Stipend Averages by Department**  
**Association of Public and Land-grant Universities (APLU) Averages**  
**(Using the OSU Graduate Assistant Stipend Survey)**  
**Academic Year 2008-2009**

CIP Code	COLLEGE Department/Program	Total		UW Salary Range <sup>3</sup>			APLU		UW Salary Factor <sup>4</sup>
		Grad. Assts. <sup>1</sup>		High	Low	Average	Salary Averages	Depts. Report'g	
		N	FTE <sup>2</sup>						
<b>COLLEGE OF ENGINEERING &amp; APPLIED SCIENCE</b>									
40.0401	Atmospheric Science	19	18.50	\$15,408	\$13,068	\$14,291	\$15,868	8	0.90
14.0701	Chemical/Petroleum Engineering	41	39.50	19,408	11,072	16,796	17,730	22	0.95
14.0801	Civil/Architectural Engineering	21	15.92	18,216	11,072	12,597	15,182	27	0.83
11.0701	Computer Science	9	9.00	15,408	11,072	14,926	14,409	15	1.04
14.1001	Electrical & Computer Engineering	26	15.00	18,886	11,072	12,376	14,385	31	0.86
14.1001	Electrical & Computer Engineering*	1	1.00	22,500	22,500	22,500	15,534	31	1.45
14.1901	Mechanical Engineering	26	21.25	22,500	11,072	13,424	14,882	29	0.90
	<b>Total Engineering &amp; Applied Science</b>	<b>143</b>	<b>120.17</b>	<b>\$22,500</b>	<b>\$11,072</b>	<b>\$14,352</b>	<b>\$15,758</b>		<b>0.91</b>
<b>COLLEGE OF HEALTH SCIENCES</b>									
51.0201	Communication Disorders	7	3.50	\$11,072	\$11,072	\$11,072	\$10,120	6	1.09
31.0505	Kinesiology and Health	12	9.25	12,917	11,072	11,380	13,611	13	0.84
51.1601	School of Nursing	4	4.00	11,072	11,072	11,072	15,277	14	0.72
51.2001	School of Pharmacy*	1	1.00	16,235	16,235	16,235	18,494	8	0.88
44.0701	Social Work	7	3.75	15,408	11,072	11,691	10,890	13	1.07
	<b>Total of Health Sciences</b>	<b>31</b>	<b>21.50</b>	<b>\$16,235</b>	<b>\$11,072</b>	<b>\$11,498</b>	<b>\$12,581</b>		<b>0.91</b>
<b>GRADUATE SCHOOL</b>									
26.0406	Molecular & Cellular Life Science*	8	8.00	18,504	15,408	15,858	16,917	4	0.94
26.1301	Ecology*	5	5.00	22,500	15,408	16,826	13,180	4	1.28
30.2401	Neuroscience*	13	12.39	18,702	17,514	17,605	17,184	2	1.02
26.0905	Reproductive Biology*	4	4.00	15,658	11,322	14,574	15,870	6	0.92
	<b>Total of Graduate School</b>	<b>30</b>	<b>29.39</b>	<b>\$22,500</b>	<b>\$11,322</b>	<b>\$16,605</b>	<b>\$16,270</b>		<b>1.02</b>

**The University of Wyoming**  
**Analysis of Graduate Assistant Stipend Averages by Department**  
**Association of Public and Land-grant Universities (APLU) Averages**  
**(Using the OSU Graduate Assistant Stipend Survey)**  
**Academic Year 2008-2009**

CIP Code	COLLEGE Department/Program	Total		UW Salary Range <sup>3</sup>			APLU		UW Salary Factor <sup>4</sup>
		Grad. Assts. <sup>1</sup>		High	Low	Average	Salary Averages	Depts. Report'g	
		N	FTE <sup>2</sup>						
<b>OTHER</b>									
99.9909	General University	27	25.50	\$15,480	\$11,072	\$12,359	\$12,561	26	0.98
99.9902	General University, Research*	7	6.25	21,150	11,072	14,472	15,156	19	0.95
22.0101	College of Law	2	1.00	11,072	11,072	11,072	8,478	3	1.31
22.0101	College of Law*	1	1.00	20,007	20,007	20,007	9,452	3	2.12
	<b>Total of Other</b>	<b>37</b>	<b>33.75</b>	<b>\$21,150</b>	<b>\$11,072</b>	<b>\$12,896</b>	<b>\$12,747</b>		<b>1.01</b>
<b>Total University of Wyoming</b>		<b>730</b>	<b>636.92</b>	<b>\$30,816</b>	<b>\$11,072</b>	<b>\$13,552</b>	<b>\$14,858</b>		<b>0.91</b>

<sup>1</sup>Based on data collected as of December 2008.

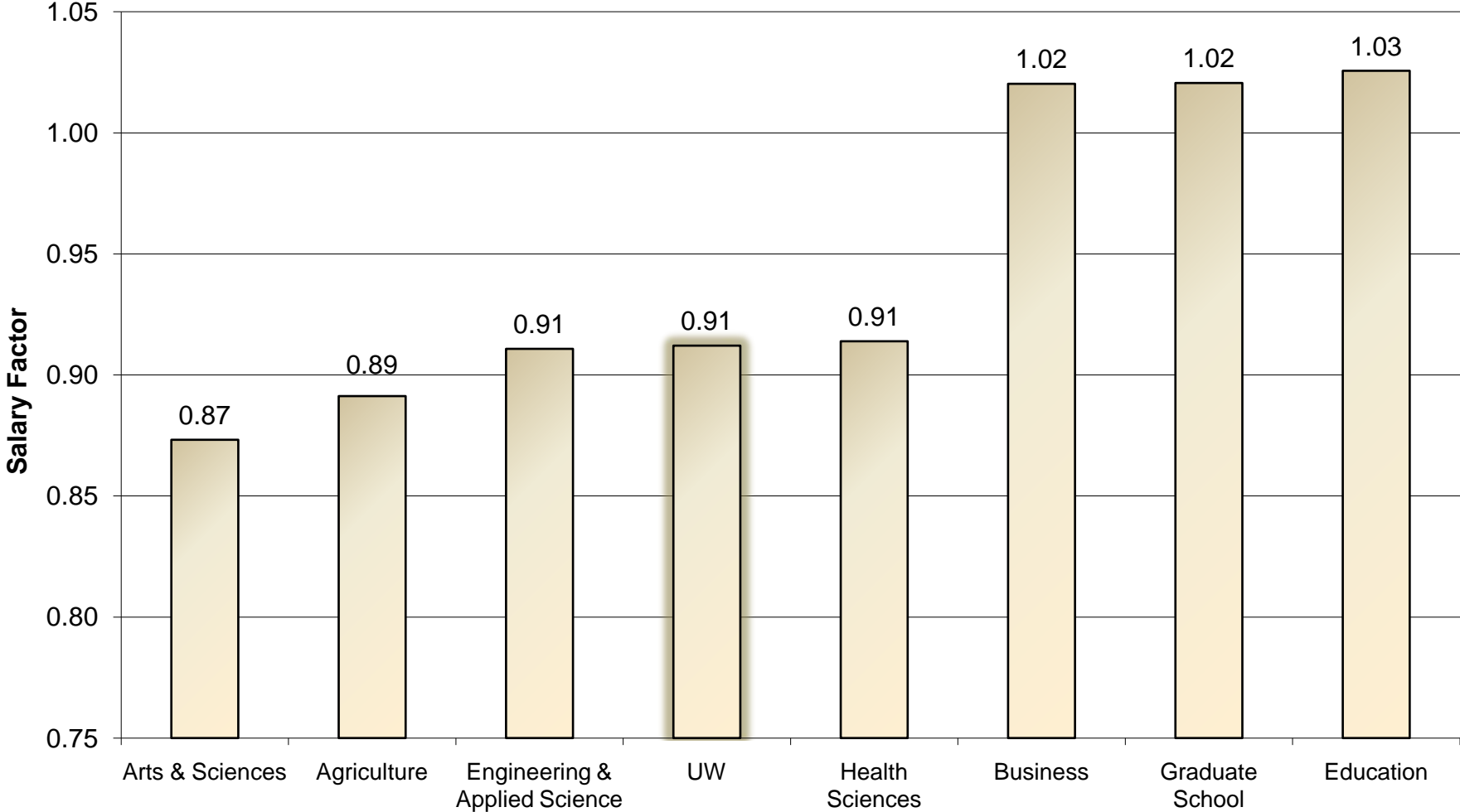
<sup>2</sup>FTE converted to 1.0 for full GA stipend.

<sup>3</sup>All GA stipends converted to academic year full stipends.

<sup>4</sup>The UW Salary Factor is calculated by dividing the UW Salary Average by the APLU Salary Average

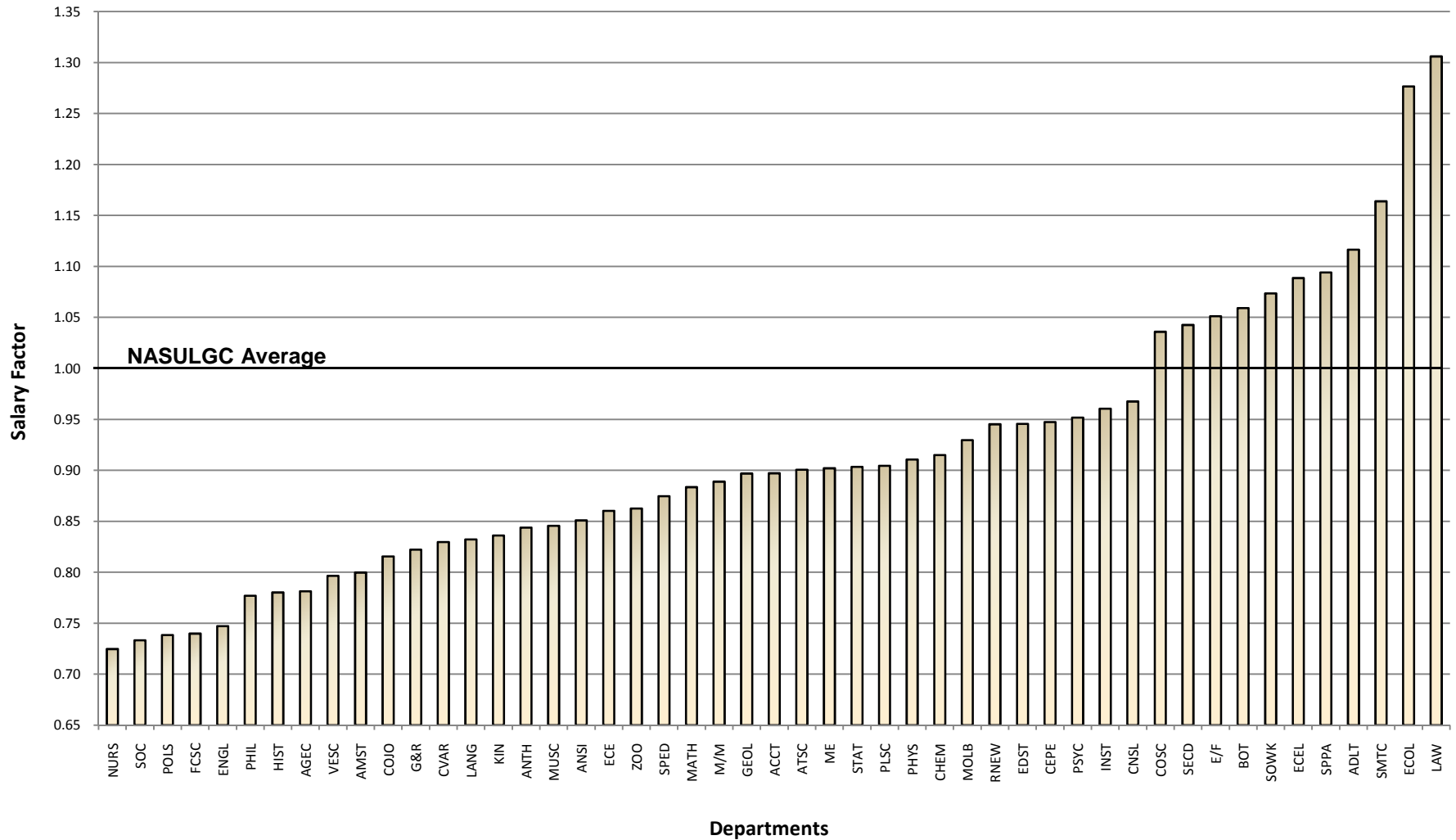
\*Research assistants.

**GA Salary Factors by College  
2008-2009**





## GA Salary Factors (non-research) by Department/Program 2008-2009



Graduate Assistant Salary Factors  
Six Year Comparison  
by Department/Program

**The University of Wyoming**  
**Department GA Salary Factors by Academic Year**  
*(Using the OSU Graduate Assistant Stipend Survey)*  
**Academic Years 2002-03 to 2007-08**

COLLEGE Department/Program	UW Salary Factor <sup>1</sup>						
	2002-03	2003-04	2004-05	2005-06	2006-07	2007-08	2008-09
<b>COLLEGE OF AGRICULTURE</b>							
Agriculture & Applied Economics	0.74	0.70	0.70	0.63	0.66	0.68	0.78
Animal Science	1.12	1.08	1.04	1.03	0.94	0.82	0.85
Family & Consumer Sciences	1.12	0.89	1.08	0.91	0.89	0.76	0.74
Food Science & Human Nutrition*	--	--	--	--	--	0.74	0.75
Molecular Biology	1.10	1.12	0.97	0.94	0.91	0.90	0.93
Molecular Biology, Research*	--	--	--	--	--	1.28	1.24
Plant Sciences	0.78	0.81	0.78	0.80	0.82	0.82	0.90
Renewable Resources	0.95	1.00	1.01	0.80	0.67	0.80	0.95
Veterinary Science	0.84	0.79	0.89	0.56	0.69	0.78	0.80
<b>Total Agriculture</b>	<b>0.97</b>	<b>0.96</b>	<b>0.95</b>	<b>0.82</b>	<b>0.77</b>	<b>0.81</b>	<b>0.89</b>
<b>Percent of NASULGC Average</b>	<b>-3%</b>	<b>-4%</b>	<b>-5%</b>	<b>-18%</b>	<b>-23%</b>	<b>-19%</b>	<b>-11%</b>
<b>COLLEGE OF ARTS &amp; SCIENCES</b>							
American Studies	0.86	0.86	0.87	0.66	0.62	0.76	0.80
Anthropology	0.90	0.81	0.84	0.78	0.73	0.77	0.84
Botany	0.87	0.68	0.66	0.86	0.88	0.86	1.06
Chemistry	0.95	0.89	0.84	0.85	0.81	0.87	0.92
Communication & Journalism	0.83	0.84	0.81	0.71	0.73	0.79	0.82
Computer Science <sup>2</sup>	1.06	0.94	--	--	--	--	--
Criminal Justice	1.04	0.54	--	--	--	--	--
English	0.85	0.77	0.74	0.71	0.70	0.73	0.75
Geography & Recreation	0.90	0.82	0.78	0.81	0.77	0.79	0.82
Geology & Geophysics	0.85	0.89	0.85	0.82	0.84	0.89	0.90
Geology & Geophysics, Research*	--	--	--	--	--	--	1.27
History	0.85	0.83	0.75	0.69	0.69	0.77	0.78
International Studies	--	--	--	0.99	0.99	1.00	0.96
Mathematics	0.80	0.78	0.77	0.73	0.77	0.70	0.88
Mathematics, Research*	--	--	--	--	--	--	1.26
Modern & Classical Languages	0.99	0.89	0.81	0.84	0.86	0.85	0.83
Music	1.04	0.91	0.88	0.86	0.82	0.84	0.85

**The University of Wyoming**  
**Department GA Salary Factors by Academic Year**  
*(Using the OSU Graduate Assistant Stipend Survey)*  
**Academic Years 2002-03 to 2007-08**

COLLEGE Department/Program	UW Salary Factor <sup>1</sup>						
	2002-03	2003-04	2004-05	2005-06	2006-07	2007-08	2008-09
<b>COLLEGE OF ARTS &amp; SCIENCES, cont'd</b>							
Philosophy	0.84	0.75	0.74	0.70	0.68	0.75	0.78
Physics & Astronomy	0.86	1.03	0.97	0.88	0.91	0.89	0.91
Physics & Astronomy, Research*	--	--	--	--	--	1.21	--
Political Science	0.83	0.74	0.72	0.65	0.63	0.73	0.74
Psychology	0.98	0.85	0.91	0.80	0.85	0.81	0.95
Psychology, Research*	--	--	--	--	--	1.39	1.58
Science & Mathematics Teaching Center <sup>3</sup>	--	1.04	--	0.98	--	1.08	--
Science & Mathematics Teaching Cntr, Research*	--	--	--	--	--	1.00	--
Sociology	0.81	0.77	0.71	0.70	0.67	0.73	0.73
Statistics	0.82	0.81	0.74	0.73	0.70	0.72	0.90
Women's Studies	0.86	0.80	0.72	0.67	--	--	--
WY Cooperative Research Unit*	0.92	0.85	0.82	0.76	0.70	0.88	0.79
Zoology & Physiology	0.92	0.84	0.87	0.98	1.01	0.82	0.86
<b>Total Arts &amp; Sciences</b>	<b>0.90</b>	<b>0.85</b>	<b>0.82</b>	<b>0.81</b>	<b>0.81</b>	<b>0.82</b>	<b>0.87</b>
<b>Percent of NASULGC Average</b>	<b>-10%</b>	<b>-15%</b>	<b>-18%</b>	<b>-19%</b>	<b>-19%</b>	<b>-18%</b>	<b>-13%</b>
<b>COLLEGE OF BUSINESS</b>							
Accounting	0.97	0.86	0.81	0.81	0.82	0.85	0.90
Business Dean's Office	0.99	--	--	--	--	--	--
E-Business	0.99	--	--	--	--	--	--
Economics & Finance	0.96	1.03	1.02	1.04	1.03	0.96	1.05
Economics & Finance, Research*	--	--	--	--	--	--	2.16
Management & Marketing	0.96	0.91	0.88	0.90	0.90	0.99	0.89
<b>Total Business</b>	<b>0.96</b>	<b>0.96</b>	<b>0.95</b>	<b>0.97</b>	<b>0.96</b>	<b>0.95</b>	<b>1.02</b>
<b>Percent of NASULGC Average</b>	<b>-4%</b>	<b>-4%</b>	<b>-5%</b>	<b>-3%</b>	<b>-4%</b>	<b>-5%</b>	<b>2%</b>

**The University of Wyoming**  
**Department GA Salary Factors by Academic Year**  
*(Using the OSU Graduate Assistant Stipend Survey)*  
**Academic Years 2002-03 to 2007-08**

COLLEGE Department/Program	UW Salary Factor <sup>1</sup>						
	2002-03	2003-04	2004-05	2005-06	2006-07	2007-08	2008-09
<b>COLLEGE OF EDUCATION</b>							
Education, general	1.32	1.15	--	--	--	--	--
Adult Learning & Technology	1.32	1.10	1.13	1.07	1.07	0.97	1.12
Counselor Education	1.20	1.22	1.10	0.89	0.83	0.95	0.97
Educational Leadership	--	--	--	--	1.08	--	--
Educational Studies	0.90	1.22	1.20	1.26	1.00	0.97	0.95
Elementary & Early Childhood Ed	1.13	0.95	0.93	1.04	0.98	0.90	1.09
Science & Mathematics Teaching Center <sup>3</sup>	1.10	--	1.06	--	1.11	--	1.16
Secondary Education	0.96	0.94	1.00	1.03	0.89	1.04	1.04
Special Education	--	--	--	--	--	0.95	0.87
Undergraduate Studies	1.26	1.15	--	--	--	--	--
<b>Total Education</b>	<b>1.03</b>	<b>1.11</b>	<b>1.08</b>	<b>1.03</b>	<b>0.94</b>	<b>0.95</b>	<b>1.03</b>
<b>Percent of NASULGC Average</b>	<b>3%</b>	<b>11%</b>	<b>8%</b>	<b>3%</b>	<b>-6%</b>	<b>-5%</b>	<b>3%</b>
<b>COLLEGE OF ENGINEERING &amp; APPLIED SCIENCE</b>							
Atmospheric Science	0.99	0.96	0.87	0.80	0.84	0.88	0.90
Chemical/Petroleum Engineering	0.86	0.94	0.97	0.80	0.88	0.95	0.95
Civil/Architectural Engineering	0.88	0.89	0.80	0.70	0.74	0.85	0.83
Computer Science <sup>2</sup>	--	--	0.99	0.91	0.92	0.83	1.04
Electrical & Computer Engineering	0.97	1.00	1.00	0.86	0.92	0.93	0.86
Electrical & Computer Engineering, Research*	--	--	--	--	--	--	1.45
Mechanical Engineering	0.96	1.03	1.07	0.95	0.87	0.92	0.90
<b>Total Engineering &amp; Applied Science</b>	<b>0.93</b>	<b>0.96</b>	<b>0.94</b>	<b>0.83</b>	<b>0.86</b>	<b>0.90</b>	<b>0.91</b>
<b>Percent of NASULGC Average</b>	<b>-7%</b>	<b>-4%</b>	<b>-6%</b>	<b>-17%</b>	<b>-14%</b>	<b>-10%</b>	<b>-9%</b>
<b>COLLEGE OF HEALTH SCIENCES</b>							
Communication Disorders	1.02	0.98	0.94	0.92	0.83	0.91	1.09
Kinesiology and Health	1.01	0.90	1.01	0.74	0.84	0.86	0.84
School of Nursing	0.83	0.68	0.86	0.80	0.75	0.79	0.72
School of Pharmacy*	--	--	1.07	1.01	0.96	1.14	0.88
Social Work	0.99	0.93	0.79	0.83	0.77	1.00	1.07
<b>Total of Health Sciences</b>	<b>1.00</b>	<b>0.91</b>	<b>0.91</b>	<b>0.85</b>	<b>0.81</b>	<b>0.90</b>	<b>0.91</b>
<b>Percent of NASULGC Average</b>	<b>0%</b>	<b>-9%</b>	<b>-9%</b>	<b>-15%</b>	<b>-19%</b>	<b>-10%</b>	<b>-9%</b>

**The University of Wyoming**  
**Department GA Salary Factors by Academic Year**  
*(Using the OSU Graduate Assistant Stipend Survey)*  
**Academic Years 2002-03 to 2007-08**

COLLEGE Department/Program	UW Salary Factor <sup>1</sup>						
	2002-03	2003-04	2004-05	2005-06	2006-07	2007-08	2008-09
<b>GRADUATE SCHOOL</b>							
Molecular & Cellular Life Science*	--	--	--	--	--	0.88	0.94
Ecology*	--	--	--	--	--	0.98	1.28
Neuroscience*	--	--	--	--	--	0.97	1.02
Reproductive Biology*	--	--	--	--	--	0.67	0.92
<b>Total of Graduate School</b>	--	--	--	--	--	0.89	1.02
<b>Percent of NASULGC Average</b>	--	--	--	--	--	<b>-11%</b>	<b>2%</b>
<b>OTHER</b>							
General University	0.97	0.91	1.05	1.17	0.92	0.92	0.98
General University, Research*	0.85	0.86	0.78	0.78	0.85	1.04	0.95
Graduate School/Interdisciplinary	0.79	--	--	--	--	--	--
Extension	0.96	1.24	--	--	--	--	--
College of Law	--	--	--	--	--	--	1.31
College of Law, Research*	--	--	--	--	--	--	2.12
<b>Total of Other</b>	<b>0.90</b>	<b>0.90</b>	<b>0.92</b>	<b>0.98</b>	<b>0.88</b>	<b>0.96</b>	<b>1.01</b>
<b>Percent of NASULGC Average</b>	<b>-10%</b>	<b>-10%</b>	<b>-8%</b>	<b>-2%</b>	<b>-12%</b>	<b>-4%</b>	<b>1%</b>
<b>Total University of Wyoming</b>							
<b>Percent of NASULGC Average</b>	<b>-7%</b>	<b>-10%</b>	<b>-11%</b>	<b>-16%</b>	<b>-17%</b>	<b>-14%</b>	<b>-9%</b>

<sup>1</sup>The UW Salary Factor is calculated by dividing the UW Salary Average by the APLU Salary Average

<sup>2</sup>Computer Science moved from A&S to Engineering in 2004-05

<sup>3</sup>Science & Mathematics Teaching Center rotates between the Colleges of A&S and Education

\*Research Assistants

## UW Graduate Assistant Stipends Compared to APLU Average 2002-03 to 2008-09

